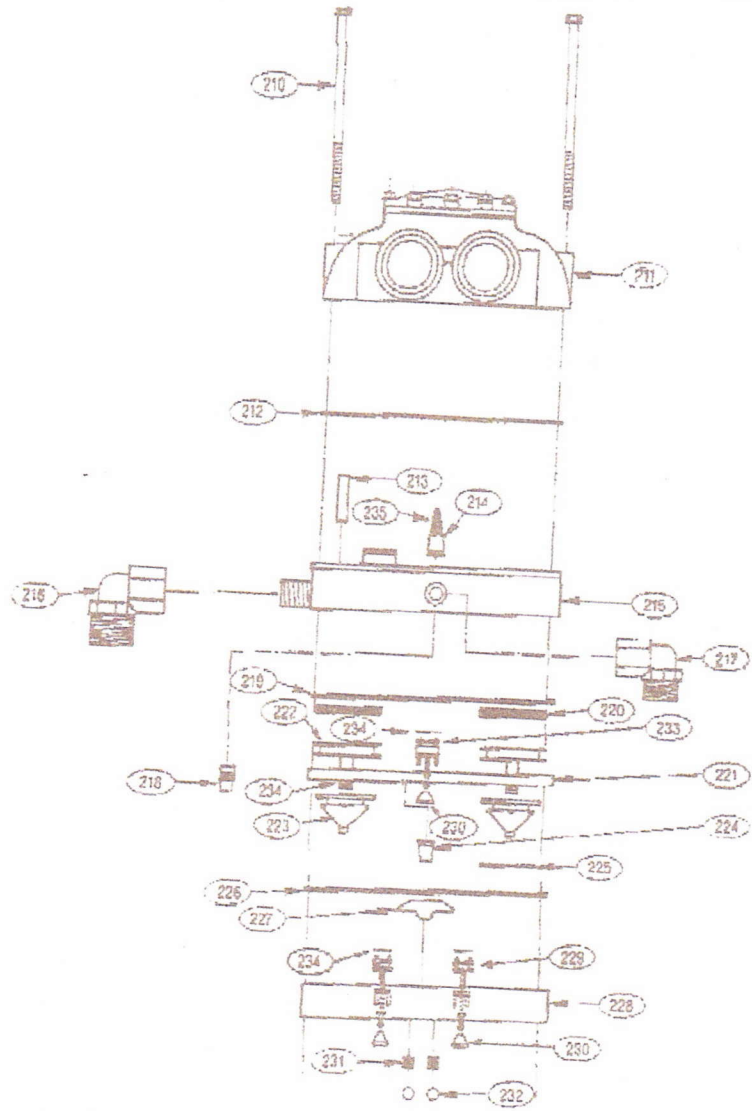


STANDARD VALVE

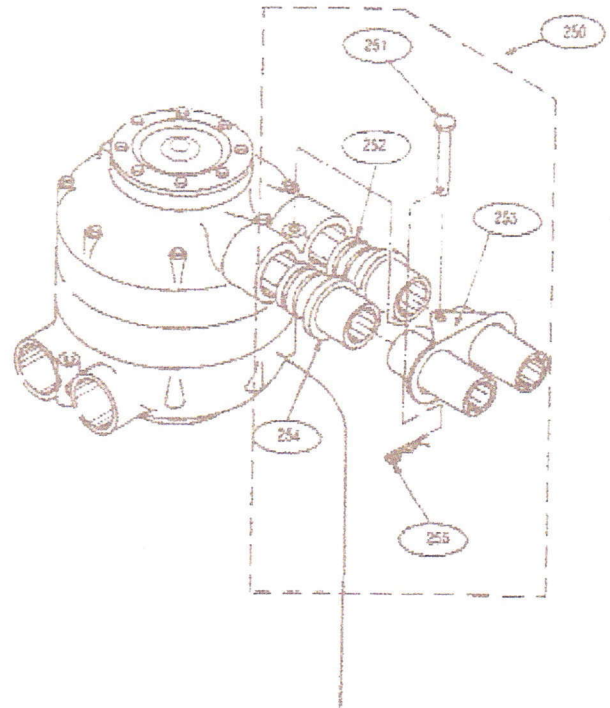
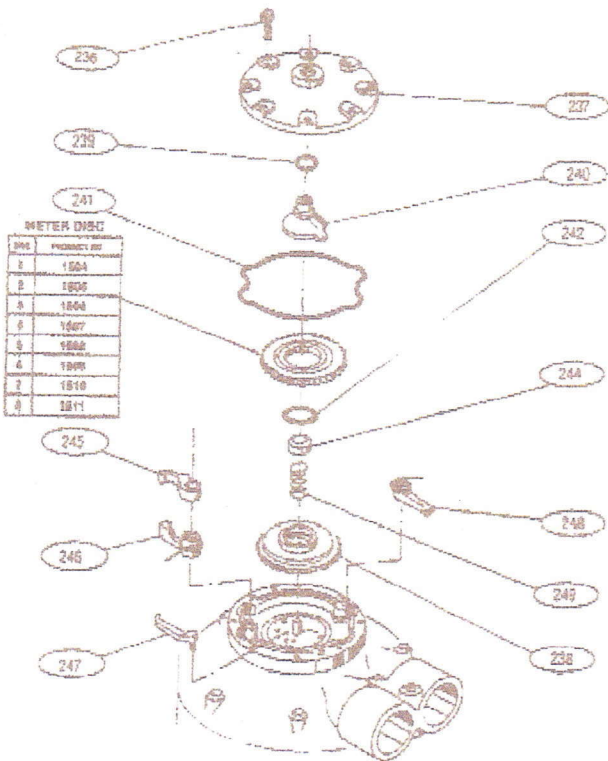


NO.	DESCRIPTION	NO.	DESCRIPTION	NO.	DESCRIPTION
210	Screw (Main Valve)	219	Seal. (L-2/3)	228	Level 5
211	Level 1	220	Quad Ring, Main Valve (Piston)	229	Drain Valve w/Quad
212	Seal (L-1)	221	Level 4	230	Seal (Drain/Control Valve)
213	Vent Tube	222	Main Valve Piston	231	Seal (Checkball)
214	Flow Control (Venturi)	223	Main Valve Seat	232	Checkball (White)
215	Level 2/3	224	Flow Control (Backwash)	233	Control, Valve w/Quad
216	Elbow, Drain	225	Seal, Main Valve (Seat)	234	Quad Ring, Drain/Control Valve
217	Elbow, Brine	226	Seal (L-4)	235	Screen, Brine Flow Control
218	Venturi Throat	227	Interlock		

Part numbers on page 110.

CAP AREA

IN / OUT ADAPTERS



NO.	DESCRIPTION
236	Screw (Cap)
237	Cap
238	Control Disc
239	O-Ring (Actuator)
240	Actuator
241	Seal (Cap)
242	O-Ring (Balance Piston)
244	Balance Piston
245	Pawl (Meter Drive)
246	Pawl (Reg. Start)
247	Pawl (No Back)
248	Pawl (Reg. Drive)

NO.	DESCRIPTION
249	Spring (Balance Piston)
250	Kit, In/Out Adapter (Brass)
	Kit, In/Out Adapter (Plas-Glue)
	Kit, In/Out Adapter (Brass-Thread)
251	Clevis Pin
252	O-Ring (Tank Conn. In/Out)
253	Adapter Bracket In/Out
254	Adapter In/Out (Brass)
	Adapter, In/Out (Plas-Glue)
	Adapter, In/Out (Brass-Thread)
255	Hairpin

Part numbers on page 11D.